

QUICK START GUIDE

In the Box ➤ iAV5v2 • Docking adapter

1 Power Button

Press and hold for 2 seconds to power unit ON or OFF.

2 Battery/Charge indicator

Solid red = charging
Solid green = fully charged

3 USB Charge Port

Connect a standard USB cable such as the one included with your Amazon Echo device to charge iAV5v2 for portable use.

4 Bluetooth Indicator

Fast blinking blue = pairing
Slow blinking blue = linking
Solid blue = paired to device

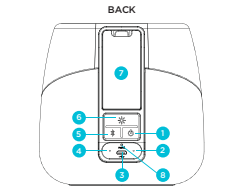
5 Bluetooth Button

Press and hold for 2 seconds to pair a device with the iAV5v2
Press to answer incoming call
Press and hold for 2 seconds to end or decline call

6 Color Change Button

Press and release to cycle through color change modes: slow fade, fast change, favorite radio, pulse to music, preset pulse mode and off.

CHARGE UNIT BEFORE USE ABOUT 7 HOURS



7 Dock cover/Built-in USB for Amazon Devices
Remove back cover to connect built-in USB cable to power your Amazon devices.

8 Pinhole Reset Port

If unit fails to respond properly, insert a paper clip or similar tool into the Reset Port on the back of the unit.

(BC)

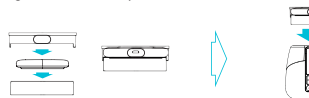
WHICH AMAZON ECHO DEVICE DO YOU WANT?

Docking Your Amazon Echo Dot



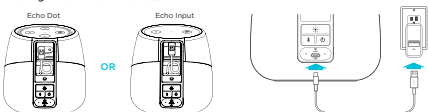
➤ Remove the included Echo Input adapter. Align the rear of the Echo Dot (the side with the USB port and Aux Jack) with the opening in the iAV5v2 dock well and place with the ports facing the back.

Docking Your Amazon Echo Input



➤ Separate the two-piece Echo Input adapter, then place the Echo Input between the top and bottom adapters, leaving the USB port accessible on the back. Close the adapter, then insert into the iAV5v2 dock so that the USB port is exposed on the back of the unit. Gently push into place.

Powering Amazon Echo Devices



➤ Connect the built-in USB cable to your Echo device's USB Port. Connect the iAV5v2 to a USB power source via USB cable (not included).
➤ The iAV5v2 powers your Amazon Echo device. Once fully charged, you can operate both the iAV5v2 and your Amazon Echo device portably.

BLUETOOTH PAIRING

Pairing and Playing Audio on Amazon Echo Devices

➤ Before proceeding, make sure your Alexa device is already configured to your home network using the Alexa app.



➤ Press and hold the **Power Button** for 2 seconds to power on the iAV5v2.
➤ Press and hold the **Bluetooth Button** for 2 seconds to enter pairing mode.

1. Open the Alexa app and select Settings.
2. Go to Menu and select Alexa Devices.
3. Select your device ("i.e. Echo Dot") on the menu.
4. Select Bluetooth Devices, then select Pair New Device.
5. Select iHome iAV5v2. You will hear a "Connected" announcement once your Echo device is paired with the iAV5v2.

➤ Done! You can now ask Alexa to access all the functions of your Echo device and hear the audio through the iAV5v2.
➤ If at any point Bluetooth disconnects, simply ask Alexa to re-connect your Bluetooth device.

VOLUME CONTROL

➤ **For Echo Dot:** Adjust the volume on the Dot to your desired level.
➤ **For Echo Input:** Ask Alexa to adjust the volume to your desired level.
➤ **TIP:** You can also use the Alexa app to adjust the volume on your Amazon Echo devices.

"Alexa, stop" "Alexa, mute" or "Alexa, unmute" "Alexa, set volume to 5" "Alexa, turn up/down the volume"

Troubleshooting for Low Audio

➤ Make sure that you fully charged the iAV5v2 (solid green battery indicator).
➤ Make sure that you raise the volume on your Echo Dot.
➤ Make sure that you connected your iAV5v2 with your Echo Dot via the Alexa app.
➤ Please note that the volume will default to a low setting after initial setup. We recommend adjusting the volume level between 5 and 10 for normal use. Volume levels below 5 are designed for quiet settings.

BATTERY LEVEL

➤ A voice will automatically announce when the battery level is very low.
➤ Press and hold the **Color Mode Button** to hear current battery level voice announcement.

Contact Us: 1-800-288-2792
For full warranty and full restrictions visit: www.iHome.com/support

Amazon, Alexa, Echo Dot and all related logos are trademarks of Amazon.com, Inc. or its affiliates.

IMPORTANT SAFETY INSTRUCTIONS

When used in the directed manner, this unit has been designed and manufactured to ensure your personal safety. However, improper use can result in potential electrical shock or fire hazards. Please read and follow all safety and operating instructions carefully before installation and use, and keep these instructions handy for future reference. Take special note of all warnings listed in these instructions and on the unit.

1. **Water and Moisture** - The unit should not be used near water. For example: near a bathtub, washbowl, kitchen sink, laundry tub, swimming pool or in a wet basement.
2. **Ventilation** - The unit should be situated so that its location or position does not interfere with its proper ventilation. For example, it should not be situated on a bed, sofa, rug or similar surface that may block ventilation openings. Also, it should not be placed in a built-in installation, such as a bookcase or cabinet, which may impede the flow of air through the ventilation openings.
3. **Heat** - The unit should be situated away from heat sources such as radiators, heat registers, stoves or other appliances (including amplifiers) that produce heat.
4. **Power Sources** - The unit should be connected to a power supply only of the type described in the operating instructions or as marked on the appliance. Only use the AC adapter that came with the unit.
5. **Power-Cable Protection** - Power supply cables should be routed so that they are not likely to be walked on or pinched by items placed upon or against them. It is always best to have a clear area from where the cable exits the unit to where it is plugged into an AC socket.
6. **Cleaning** - The unit should be cleaned only using a warm damp cloth. Do not use solvents, etc.
7. **Objects and Liquid Entry** - Care should be taken so that objects do not fall and liquids are not spilled into any openings or vents located on the product.
8. **Attachments** - Do not use attachments not recommended by the product manufacturer.
9. **Lightning and Power Surge Protection** - Unplug the unit from the wall socket and disconnect the antenna or cable system during a lightning storm or when it is left unattended and unused for long periods of time. This will prevent damage to the product due to lightning and power-line surges.
10. **Overloading** - Do not overload wall sockets, extension cords, or integral convenience receptacles as this can result in a risk of fire or electric shock.
11. **Damage Requiring Service** - The unit should be serviced by qualified service personnel when:
 - A. the power supply cable or plug has been damaged.
 - B. objects have fallen into or liquid has been spilled into the enclosure.
 - C. the unit has been exposed to rain.
 - D. the unit has been dropped or the enclosure damaged.
 - E. the unit exhibits a marked change in performance or does not operate normally.
12. **No naked flame sources**, such as lit candles, should be placed on the apparatus
13. The power adapter, used as the disconnected device, it is always best to have a clear area from where the cable exits the unit to where it is plugged into an AC socket.
14. **Periods of Non-use** - If the unit is to be left unused for an extended period of time, such as a month or longer, the backup battery should be removed from the unit to prevent damage or corrosion.
15. **Service** - The user should not attempt to service the unit beyond those methods described in the user's operating instructions. Service methods not covered in the operating instructions should be referred to a qualified service personnel.

FCC Information

FCC Radiation Exposure Statement

The device has been evaluated to meet general RF exposure requirement.

FCC ID: EMOIAV5

This device complies with Part 15 of the FCC Rules, operation is subject to the following two conditions: (1) This device may not cause harmful interference, and (2) This device must accept any interference received, including interference that may cause undesired operation.

➤ Warnings, Changes or modifications to this unit not expressly approved by the party responsible for compliance could void the user's authority to operate the equipment.
NOTE: The device has been tested and found to comply with the limits for a Class B digital device, pursuant to Part 15 of the FCC Rules. These limits are designed to provide reasonable protection against harmful interference in a residential installation. This equipment generates, uses and can radiate radio frequency energy and, if not installed and used in accordance with the instructions, may cause harmful interference to radio communications. However, there is no guarantee that interference will not occur in a particular installation. If this equipment does cause harmful interference to radio or television reception, which can be determined by turning the equipment off and on, the user is encouraged to try to correct the interference by one or more of the following measures:
➤ Reorient or relocate the receiving antenna.
➤ Increase the separation between the equipment and receiver.
➤ Connect the equipment into an outlet on a circuit different from that to which the receiver is connected.
➤ Consult the dealer or an experienced radio/TV technician for help.

CAN ICES-3 (B)/NMB-3(B)

This device complies with Industry Canada's license-exempt RSS standard(s). Operation is subject to the following two conditions:
(1) This device may not cause interference; and
(2) This device must accept any interference, including interference that may cause undesired operation of the device.
Le présent appareil est conforme aux CNR d'Industrie Canada applicables aux appareils radio exempts de licence. L'exploitation est autorisée aux deux conditions suivantes :
(1) l'appareil ne doit pas produire de brouillage;
(2) l'utilisateur de l'appareil doit accepter tout brouillage radioélectrique subi, même si le brouillage est susceptible d'en compromettre le fonctionnement.
The device has been evaluated to meet general RF exposure requirement.
The device can be used in portable exposure condition without restriction.
le dispositif a été évalué à satisfaire l'exigence générale de l'exposition aux rf. l'appareil peut être utilisé dans des conditions d'exposition portatif sans restriction.

WARNING/DISPOSAL OF UNIT

➤ Do NOT attempt to change the battery. Doing so will void the warranty and could cause injury and damage to your device.
➤ To dispose of the unit, follow the instructions below:
➤ Never dispose of used batteries/electronics with ordinary solid wastes, since they contain toxic substances.
➤ Always dispose of used batteries/electronics in accordance with the prevailing community regulations.
➤ Many electronics retailers now recycle batteries and other electronic components at no charge.
GENERAL BATTERY PRECAUTIONS
➤ Never use or charge a battery if it appears to be leaking, discolored, deformed, or in any way abnormal.
➤ Never disassemble the unit or attempt to remove battery as that could cause leakage of alkaline solution or other electrolytic substances.
➤ Avoid charging a rechargeable battery when the temperature is not within 5°C - 35°C (41° - 95° Fahrenheit).
➤ Never expose a battery to any liquid.
➤ Never expose a battery to excessive heat such as direct sunlight or fire. Never use a battery pack in an unventilated vehicle where excessive internal temperatures may be encountered.
➤ Always keep batteries out of the reach of infants and small children.



For warranty and full instructions visit: www.iHome.com/support
© 2018 SDI Technologies, Inc. All rights reserved.
Questions? Visit www.iHome.com or call 1-800-288-2792 Toll Free