

iHome ***FIT***

iB71

Water-Resistant Wireless Sport Earbuds

mic+remote • rechargeable • removable earhooks

User Manual

**CHARGE
BEFORE
USE**



Introduction

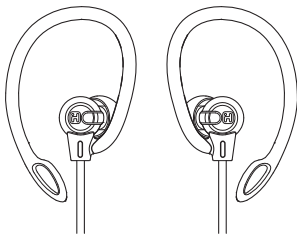
Your new iHome Bluetooth stereo ear buds are designed to link with your Bluetooth enabled smartphone or music player to allow you to wirelessly listen to music and answer phone calls within the normal 10 meter (33 feet) Bluetooth operating range.

Your ear buds are supplied with 3 sizes of ear cushions to allow you to customize your ear buds for maximum wearing comfort and stability during all kinds of exercise and physical activities. We have also supplied a set of detachable ear hooks for stability during the most strenuous exercise.

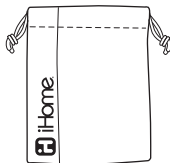
Your ear buds are have been tested for water resistance and are classified as IPX5, meaning that they have a high level of water resistance and can be safely used even in the rain without damage. However, please note that they are not submersible.

Please review this manual carefully to make sure you are getting the maximum benefit from all of the features of your new ear buds, and keep this manual for future reference.

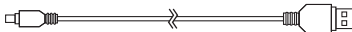
What's Included



iB71 Stereo ear buds
with Control Dongle and
Detachable Earhooks x 2



Drawstring Travel
Pouch x 1



USB Charging Cable X 1



L x 2
SIZE



M x 2
SIZE



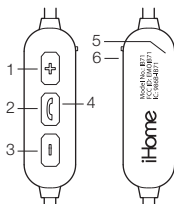
S x 2
SIZE

Silicon Ear Cushions

PREPARATION FOR USE

1. Controls and Indicators

1	+ Button (Volume Up / Skip Forward)
2	Multi-Function Control Button (MFB)
3	- Button (Volume Down / Skip Back)
4	Power/Pairing/Charging LED Indicators
5	Microphone (on back side of dongle)
6	USB Charging Port (Under Water-Resistant Cover)



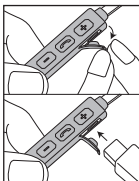
2. Charging Your iHome FIT Ear Buds

Your iHome Bluetooth ear buds operate on a built-in rechargeable battery. Although the battery was fully charged when it left our factory, the battery can lose power even during periods of non-use. Make sure to charge the battery before using the phone for the first time.

To charge the battery connect the larger plug of the included USB charging cable to the powered USB port of a computer or a USB/AC adapter and then connect the smaller plug to the USB charging port on side of the control dongle, below the water resistant cover, as shown in the illustration.

The Charging Indicator will glow red while the ear buds are charging. The indicator will turn off when the ear buds are fully charged and ready to use.

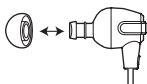
When fully charged the battery should provide up to 4 hours of talk time or music playing time at a normal listening level. If operated at maximum volume the music playing time will be reduced. **NOTE:** While charging, the earbud power will turn off to conserve battery power and minimize charging time.



3. Wearing Your iHome FIT Ear Buds

The 'M' size silicon tips were installed on the ear buds at our factory.

If you wish to change to either the 'S' or 'L' size tips simply pull the 'M' size tips off the ear buds and replace them with the 'S' or 'L' size tips. Be sure to push the 'S' or 'L' size tips on to the ear buds until they are firmly seated on the tubes so that the tips do not come off the ear buds when you remove them from your ears. Using the proper size tips will insure that you get the best possible seal in your ear canal and provide the best audio quality.



Note that both the ear buds and the detachable ear hooks are marked 'L' (Left) and 'R' (Right). When installing the ear hooks make sure you install the 'L' ear hook on the 'L' ear bud and the 'R' ear hook on the 'R' ear bud.

To install the ear hooks thread the cable through the slot on the ear hooks as shown and then push the ear bud downward into the hook until it locks in place. Refer to the following illustration.

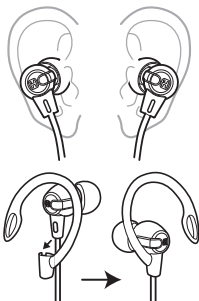
To remove the ear-hooks, pull the ear buds upward to release them from the hooks.

You may place the hooks over your ears first and then position the ear buds in your ears, or you may place the ear buds in your ears first and then position the flexible hooks over your ears, whichever is easier for you.

The iB71 ear buds have angled tips for a more secure fit. They can only be worn one way, with the 'R' ear bud in your right ear and the 'L' ear bud in your left ear.

The recommended usage is to position the cable behind your neck before inserting the ear buds in your ears. The ear buds should be worn with the control dongle on your right side.

Note: Noise isolation ear buds like the iB71 are designed to provide a good seal in your ears and block outside sounds. You should not use noise isolation ear buds in situations that require you to hear outside warning sounds



OPERATING INSTRUCTIONS

1. Switching Your Ear Buds On and Off

NOTE: The first time you perform this operation you might find it convenient to place only the left ear bud in your left ear. This will allow you to hold the control dongle in your right hand so that you can see the control buttons and the LED indicator and still hear the confirming voice prompts in your left ear. Once the ear buds have turned on and paired with your Bluetooth device you can then place the right ear bud in your right ear.

2. Power On / Auto-Linking Mode

PRESS and HOLD the Multi-Function Button (MFB) on the control dongle for approximately 2 seconds until you hear the "Power On" voice prompt that confirms the power is 'On'. The blue LED begins flashing slowly indicating that your ear buds are in the Auto-Linking Mode and trying to re-link to a previously paired device as long as that device is within the normal pairing range of approximately 33-feet. If your ear buds do not find a previously paired device that is in range and turned 'on' within 3 minutes they will switch from the Auto-Linking mode to the Power 'Off' mode to extend the battery life.

3. Power Off

To shut the power 'Off' at any time PRESS and HOLD the Multi-Function Button (MFB) on the control dongle for approximately 2 seconds. You will hear the voice prompt say "Power Off". The red LED flashes three times and then the power shuts off.

4. Manually Pairing Your iHome Ear Buds With Your Bluetooth Device

With the ear buds in the 'Off' mode, PRESS and HOLD the Multi-Function Button (MFB) on the control dongle for approximately 7 seconds. After 2 seconds you will hear the "Power On" voice prompt, and after another 5 seconds you will hear the "Pairing" voice prompt and the LED indicator begins alternately flashing blue and red. Release the Multi-Function Button (MFB)

Make sure that your Bluetooth device is turned 'On' and in the Pairing mode. Refer to the instructions supplied with your device if necessary. When your device "finds" the iB71 ear buds, you will see "iHome iB71" appear on your devices Bluetooth menu screen together with the words "Not Paired", "Not Connected" or similar. Touch "iHome iB71" to complete the pairing process. You will hear the voice prompt say "Your device is connected", and you will see "iHome iB71 Connected" on your devices Bluetooth menu. The LED indicator will slowly flash blue when you are successfully paired. NOTE: If your Bluetooth device asks for a Password or a PIN to complete the pairing process, enter "0000" on the keypad of your device.

You are now ready to begin streaming music wirelessly from your Bluetooth device to your iHome iB71 Bluetooth ear buds.

5. Using Your iHome *FIT* Bluetooth Ear Buds

The following chart explains the basic functions and operations of your Bluetooth ear buds.

Function	Action Required
Turn Ear Buds 'On'	When Ear Buds are 'Off' Press and Hold the MFB for 2 seconds until you hear the "Power On" voice prompt. The LED indicator flashes blue.
Enter the Pairing Mode	When Ear Buds are 'Off' Press and Hold the MFB for 7 seconds until you hear the "Pairing" voice prompt and see the LED indicator alternately flashing red and blue.
Pairing	Make sure your Bluetooth device is 'On' and in the Pairing Mode. When iHome iB71 appears on your device's menu, select it to complete pairing.
Play / Pause	Short press the MFB to start playback. Short press to pause playback. Short press to resume playback.
Skip to next track	Short press the "+" button during playback
Skip to beginning of current track	Short press the "-" button during playback
Skip to beginning of previous track	Short press the "-" button twice during playback
Increase volume	Press and hold the "+" button during playback
Decrease volume	Press and hold the "-" button during playback
Answer an incoming phone call	Short press the MFB when you hear the incoming ring sound. NOTE: Music will automatically pause when you are answering a call and resume when you end the call.
Decline an incoming phone call	Press and hold the MFB for 2 seconds to decline the incoming call.
End a call	Short press the MFB to end the call and 'hang up'.
Transfer a call between the phone and the ear buds	Transfer a call between the phone and the ear buds While the call is in progress double press the MFB to transfer the call between the phone and the ear buds.
Last number redial	When phone is paired with ear buds but no call is in progress double press the MFB to redial the last number.
Clear all paired devices	Press and hold both the "+" and the "-" buttons for 7 seconds.
Turn Ear Buds Off	Press and hold the MFB for 2 seconds until you hear the "Power Off" voice prompt. The LED indicator flashes red and then shuts off.

This device complies with Industry Canada's licence-exempt RSSs. Operation is subject to the following two conditions:

- (1) This device may not cause interference; and
- (2) This device must accept any interference, including interference that may cause undesired operation of the device.

This device complies with Part 15 of the FCC Rules, operation is subject to the following two conditions:
(1) This device may not cause harmful interference, and (2) this device must accept any interference received, including interference that may cause undesired operation.

- **Warning:** Changes or modifications to this unit not expressly approved by the party responsible for compliance could void the user's authority to operate the equipment.
- **NOTE:** This equipment has been tested and found to comply with the limits for a Class B digital device, pursuant to Part 15 of the FCC Rules.

These limits are designed to provide reasonable protection against harmful interference in a residential installation. This equipment generates, uses and can radiate radio frequency energy and, if not installed and used in accordance with the instructions, may cause harmful interference to radio communications.

However, there is no guarantee that interference will not occur in a particular installation. If this equipment does cause harmful interference to radio or television reception, which can be determined by turning the equipment off and on, the user is encouraged to try to correct the interference by one or more of the following measures:

- Reorient or relocate the receiving antenna.
- Increase the separation between the equipment and receiver.
- Connect the equipment into an outlet on a circuit different from that to which the receiver is connected.
- Consult the dealer or an experienced radio/TV technician for help.

CAN ICES-3 (B)/NMB-3(B)

The device meets the exemption from the routine evaluation limits in section 2.5 of RSS 102 and compliance with RSS-102 RF exposure, users can obtain Canadian information on RF exposure and compliance.

Limited One-Year Warranty Information

iHome Products, a division of SDI Technologies Inc. (hereafter referred to as SDI), warrants this product to be free from defects in workmanship and materials, under normal use and conditions, for a period of one (1) year from the date of original purchase.

Should this product fail to function in a satisfactory manner, it is best to first return it to the store where it was originally purchased. Should this fail to resolve the matter and service still be required by reason of any defect or malfunction during the warranty period, SDI will repair or, at its discretion, replace this product without charge. This decision is subject to verification of the defect or malfunction upon delivery of this product to the Factory Service Center authorized by Customer Service.

If service is required, please call Customer Service at 1-800-288-2792 to obtain a Return Authorization Number and shipping instructions.

Disclaimer of Warranty

NOTE: This warranty is valid only if the product is used for the purpose for which it was designed. It does not cover (i) products which have been damaged by negligence or willful actions, misuse or accident, or which have been modified or repaired by unauthorized persons; (ii) cracked or broken cabinets, or units damaged by excessive heat; (iii) damage to digital media players, CD's or tape cassettes (if applicable); (iv) the cost of shipping this product to the Factory Service Center and its return to the owner.

This warranty is valid only in the United States of America and does not extend to owners of the product other than to the original purchaser. In no event will SDI or any of its affiliates, contractors, resellers, their officers, directors, shareholders, members or agents be liable to you or any third party for any consequential or incidental damages, any lost profits, actual, exemplary or punitive damages. (Some states do not allow limitations on implied warranties or exclusion of consequential damages, so these restrictions may not apply to you.) This warranty gives you specific legal rights, and you may also have other rights which vary from state to state.

Your acknowledgement and agreement to fully and completely abide by the above mentioned disclaimer of warranty is contractually binding to you upon your transfer of currency (money order, cashier's check, or credit card) for purchase of your SDI product.

© 2016 SDI Technologies, Inc. All rights reserved.
Questions? Visit www.ihome.com
or call 1-800-288-2792 Toll Free