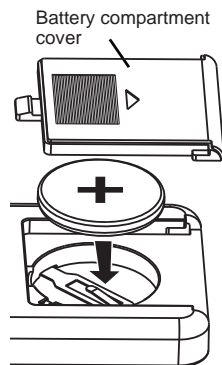


## Replacing the Battery

Your Rx1 remote control comes with one CR2032 battery installed. When the range of the remote seems reduced or if it ceases to work properly, it's time to replace the battery.

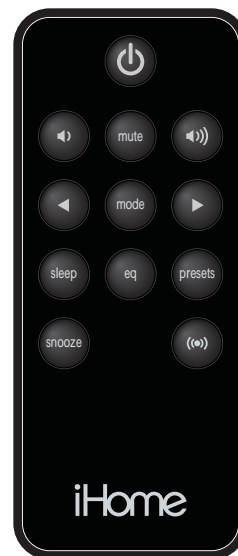
1. Slide battery compartment cover on rear of remote control off and remove battery.
2. Place fresh CR2032 in battery well as shown (make sure +/- polarity matches markings).
3. Replace battery compartment cover.



**WARNING:** Lithium batteries can explode or cause burns if disassembled, shorted, recharged, exposed to water, fire, or high temperatures. Do not place loose batteries in a pocket, purse, or other container containing metal objects, mix with used or other battery types, or store with hazardous or combustible materials. Store in cool, dry, ventilated area. Follow applicable laws and regulations for transport and disposal.

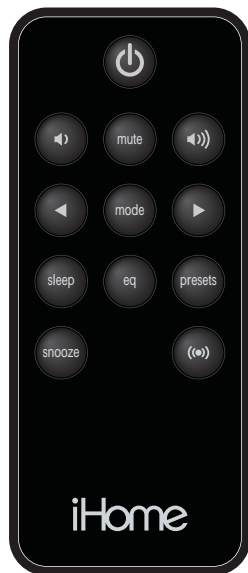
# iHome<sup>®</sup>

Rx1



remote control  
instruction booklet

## Controls



### Power/Alarm Reset Button

- Turns unit ON or OFF.
- Shuts off alarm and resets alarm to come on at the same time the following day.



### Lower/Raise Volume

- Raises or lowers volume of the unit



### Mute Button

- Mute ON/OFF



### Forward/Reverse Buttons

- Raises and lowers EQ settings
- In Radio mode tunes in station (press and hold to scan to next clear station)



### Mode Button

- Switches between available modes



### Sleep Button

- Powers on unit and shuts it off after set time



### EQ Button

- Cycles EQ modes (bass, treble, 3D, balance, etc.)
- Use FWD or REV to adjust EQ settings



### Presets Button

- Cycles through AM or FM radio presets



### Snooze Button

- Temporarily mutes alarm for predetermined time



### SFX Button

- Toggles special audio effects on the unit (Expanded bass, etc.) ON or OFF.

*NOTE: this universal-type remote control may have features and functions that don't apply to or work with your particular iHome model.*