

Model: iZ20  
Instruction manual - US English  
Folded Size: 102W x 150H mm  
layout size: 204W x 150H mm  
Date: June 30, 2021-v5  
Mat'l: 100gsm paper (WF)  
Color: Black colour

Warranty

Cover

## ISED INFORMATION

This equipment complies with IC RSS-102 radiation exposure limits set forth for an uncontrolled environment.

This device contains licence-exempt transmitter(s)/receiver(s) that comply with Innovation, Science and Economic Development Canada's licence-exempt RSS(s). Operation is subject to the following two conditions:

(1) This device may not cause interference.

(2) This device must accept any interference, including interference that may cause undesired operation of the device.

The device comply with ISED RF exposure requirement, users can obtain Canadian information on RF exposure and compliance.

This equipment should be installed and operated with a minimum distance of 20 cm between the radiator and your body.

Any Changes or modifications not expressly approved by the party responsible for compliance could void the user's authority to operate the equipment.

Cet équipement est conforme aux limites d'exposition aux radiations IC CNR-102 établies pour un environnement non contrôlé.

L'émetteur/récepteur exempt de licence contenu dans le présent appareil est conforme aux CNR d'Innovation, Sciences et Développement économique Canada applicables aux appareils radio exempts de licence. L'exploitation est autorisée aux deux conditions suivantes :

(1) L'appareil ne doit pas produire de brouillage;

(2) L'appareil doit accepter tout brouillage radioélectrique subi, même si le brouillage est susceptible d'en compromettre le fonctionnement.

L'appareil est conforme aux exigences d'exposition RF ISED, les utilisateurs peuvent obtenir des informations canadiennes sur l'exposition aux RF et la conformité.

Cet équipement doit être installé et utilisé avec une distance minimale de 20 cm entre le radiateur et votre corps.

Tout changement ou modification non expressément approuvé par la partie responsable de la conformité peut annuler l'autorité de l'utilisateur à utiliser l'équipement.

CAN ICES-3(B) / NMB-3(B)

## WARRANTY

For product support information and warranty please visit:  
[www.ihome.com/support](http://www.ihome.com/support)

© 2021 SDI Technologies, Inc. All rights reserved  
Questions? Visit [www.ihome.com](http://www.ihome.com)

iZ20-063021-A(EN)

Printed in China

iHome  
BABY



## Model iZ20

Portable Soothing Machine

QUESTIONS? visit [www.ihome.com](http://www.ihome.com)

June 30, 2021

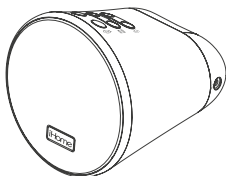
# WELCOME

Thank you for choosing the iZ20 Portable Soothing Machine from iHome. This user guide will get you up and running quickly. For more information about this and other iHome products, please visit [www.ihome.com](http://www.ihome.com)

## GETTING STARTED

This unit ships with the following items. Please check to see that all items are present.

1. iZ20 speaker
2. USB-C cable



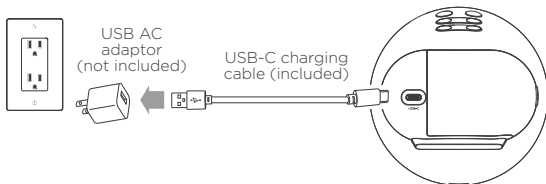
1. iZ20 speaker



2. USB-C cable


## CONNECTING THE IZ20

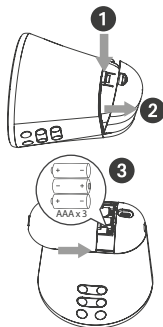
Plug the included USB-C cable into the USB-C port on the back of the unit. Connect the plug to a working outlet not controlled by a light switch.



# INSTALLING/REPLACING BATTERIES FOR PORTABLE USE

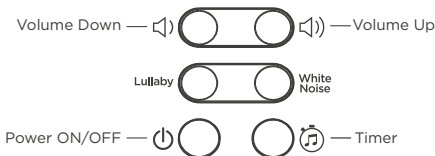
This unit requires 3 AAA batteries (not included) for portable operation. We recommend alkaline batteries for longest life.

1. Press the  button and open the battery compartment door on back of unit.
2. Insert 3 new AAA batteries, making sure to match polarity (+/-) as shown.
3. Close the battery door.

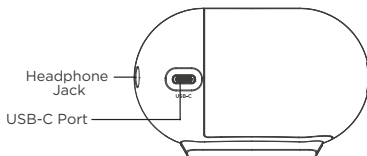


## FEATURES & FUNCTIONS

### TOP PANEL



### BACK PANEL



### TURNING THE UNIT ON AND OFF

- Press the  **Power Button** to turn the unit ON or OFF.

## SOOTHING SOUND MODE

Soothing Sound Mode uses specially recorded and engineered sounds to allow your baby to relax.

Press the **Lullaby Button** to play Brahms for your baby.


Press the **White Noise Button** to activate more soothing sounds.

Continue to press to cycle through 8 different sound modes.

- Press and release the **Volume Buttons**  or  to adjust speaker volume.

## TIMER MODE

The programmable timer mode lets you set sound therapy to play for a set duration.

Press and release the **Timer Button**  as needed to cycle to the desired timer duration: 30, 60, 90 minutes or OFF. Timer mode is indicated by 3 timer indicator lights located on the front speaker grille. The left LED indicates 30 minutes remaining, the center LED indicates 60 minutes remaining, and the right LED indicates 90 minutes remaining. Timer mode is inactive when no timer indicator is lit.

## HEADPHONE JACK

To listen without disturbing others, connect a pair of headphones (not included) to the Headphone Jack  on the side of the unit.

Press the Volume Buttons to adjust speaker volume.

## MAINTENANCE

- Place the unit on a level surface away from sources of direct sunlight or excessive heat.
- Protect your furniture when placing your unit on a natural wood and lacquered finish. A cloth or other protective material should be placed between it and the furniture.
- Clean your unit with a soft cloth slightly moistened only with mild soap and water. Stronger cleaning agents such as thinner or similar materials can damage the surface of the unit.

## BATTERY CAUTIONS AND TIPS

- Only use the recommended/supplied batteries or equivalent.
- Use alkaline batteries for longer life.
- Do not mix old and new batteries, and do not mix alkaline, carbon-zinc or rechargeable nickel-cadmium batteries.
- Insert batteries with proper polarity (+/-) as indicated.
- Remove exhausted batteries from product. KEEP OUT OF CHILDREN'S REACH and dispose of properly.
- Do not attempt to recharge non-rechargeable batteries.
- Do not open batteries or heat them beyond normal ambient temperatures.
- To prevent battery leakage or damage remove batteries from a product if it will not be used for a month or longer.
- Use extreme caution handling leaking batteries (avoid direct contact with eyes and skin). If battery leakage comes in contact with eyes, IMMEDIATELY flush the eye with lukewarm and gently flowing water for at least 30 minutes. If skin contact occurs, wash skin with clean water for at least 15 minutes. Seek medical attention if any symptoms occur.
- Store in cool, dry, ventilated area away from hazardous or combustible material.
- Do not dispose of batteries in a fire.
- Follow applicable laws and local regulations for the disposal and transportation of batteries.

# IMPORTANT SAFETY INSTRUCTIONS

Please heed all warnings, read and follow all instructions and keep these instructions handy for future reference.

1. Do not use this product near water.
2. Unplug unit and clean only with damp cloth. Stronger cleaning agents, such as Benzene, thinner or similar materials can damage the surface of the unit.
3. Do not block any ventilation openings. Install in accordance with the manufacturer's instructions.
4. Heat - This product should be situated away from heat sources such as radiators, heat registers, stoves or other appliances (including amplifiers) that produce heat.
5. Only use attachments/accessories specified by the manufacturer.
6. Unplug this product during lightning storms or when unused for long periods of time.
7. Damage Requiring Service - This product should be serviced by qualified service personnel when:
  - Plug has been damaged.
  - Objects have fallen into or liquid has been spilled into the enclosure.
  - The unit has been exposed to rain. The unit has been dropped or the enclosure damaged.
  - The unit exhibits a marked change in performance or does not operate normally.
8. No naked flame sources, such as lighted candles, should be placed on this product.
9. Attention should be drawn to the environmental aspects of battery disposal.
10. This product is suitable for use in tropical and/or moderate climates.

## **WARNING:**

- To reduce the risk of fire or electric shock, do not expose this product to rain or moisture.
- Do not dispose of batteries in the household trash or fire.
- The mains plug of power adaptor is used as the disconnect device, it shall remain readily operable.
- CAUTION - Danger of explosion if battery is incorrectly replaced.
- Always use a UL/ETL certified charging adapter (not included), and the supplied USB charging cable.

## FCC INFORMATION

This equipment complies with FCC RF radiation exposure limits set forth for an uncontrolled environment.

This device complies with Part 15 of the FCC Rules, operation is subject to the following two conditions:

(1) This device may not cause harmful interference, and (2) this device must accept any interference received, including interference that may cause undesired operation.

- Warning: Changes or modifications to this unit not expressly approved by the party responsible for compliance could void the user's authority to operate the equipment.
- NOTE: This equipment has been tested and found to comply with the limits for a Class B digital device, pursuant to Part 15 of the FCC Rules.

These limits are designed to provide reasonable protection against harmful interference in a residential installation. This equipment generates, uses and can radiate radio frequency energy and, if not installed and used in accordance with the instructions, may cause harmful interference to radio communications.

However, there is no guarantee that interference will not occur in a particular installation. If this equipment does cause harmful interference to radio or television reception, which can be determined by turning the equipment off and on, the user is encouraged to try to correct the interference by one or more of the following measures:

- Reorient or relocate the receiving antenna.
- Increase the separation between the equipment and receiver.
- Connect the equipment into an outlet on a circuit different from that to which the receiver is connected.
- Consult the dealer or an experienced radio/TV technician for help.

This equipment should be installed and operated with minimum distance 20cm between the radiator & your body.